



Job Name:

Catalog Number:

Type:

## SBBRIO SERIES | LED AREA LIGHT

### FEATURES

- High efficacy up to 130LPW
- Different types of distributions available: Type II, III, IV, V (90°), V (120°)
- Available wattage range: 50 Watts and 300 Watts
- Suitable for wet location Ip65
- 0-10V dimming capable

### CONSTRUCTION

- One-piece, die-formed aluminum housing contains factory prewired driver
- Wiring access door (with safety lanyard) located underneath
- Different types of distributions available: Type II, III, IV, V (90°), V (120°)
- Exceptional uniformity creates bright environment at lower light levels
- Heavy duty mounting options, angle adjustable, with seal and stainless steel screws
- Ingress protection rating of IP65 for dust and water

### ELECTRICAL

- Available with universal voltage power supply 120-277 VAC (50/60Hz input), and 300-480 VAC
- Comes with power factor greater than 0.95%
- Total Harmonics Distortion less than 15%
- Suitable for up to 50°C (122°F) ambient temperature
- Minimum starting temperature is -40 F°/-40° C

### LIGHT SOURCE

- Multi-chip, high-output, long-life LEDs
- Clear tempered flat glass lens permanently sealed to weather-tight aluminum optic frame creates an IP65 rated optical unit (includes pressure-stabilizing breather)
- LED color temperature is warrantied to shift no more than 200K in CCT over a 5 year period
- Luminaire is rated for 50,000 hour of operation
- Light engine's available in 3000K, 4000K, 5000K and 6500K
- Superior light rendering index more than 80+

### PRODUCT IMAGE



### APPLICATIONS

- Parking lots, Roads & Highways, Walkways

### WARRANTY

- 5-Year limited warranty. Please refer [www.highlineled.com/](http://www.highlineled.com/) for complete warranty terms and conditions.

### LISTINGS

- ETL Listed
- Wet Location Rated
- DesignLights Consortium® (DLC) qualified product. Not all versions of this product may be DLC qualified. Please contact our sales rep for list of DLC approved products.

### ORDERING INFORMATION

EXAMPLE ORDERING NUMBER : SBBRIO-ND-UNV-100-30-80-GR-3M-AM1



| Family | Dimming          | Input           | Power/Lumens       | CCT        | CRI         | Finish        | Distribution                            | Options                                                                              |
|--------|------------------|-----------------|--------------------|------------|-------------|---------------|-----------------------------------------|--------------------------------------------------------------------------------------|
| SBBRIO | D - Dimming      | 120 - 120V      | 100 - 100W,13000LM | 30 - 3000K | 80 - 80 CRI | WH - White    | 2 - Type II                             | Blank - No Option                                                                    |
|        | ND - Non-Dimming | 277 - 277V      | 150 - 150W,19500LM | 40 - 4000K | 90 - 90 CRI | BK - Black    | 3S - Type III Short                     | UPM - Universal Pole Mount                                                           |
|        |                  | UNV - Universal | 200 - 200W,26000LM | 50 - 5000K |             | BZ - Bronze   | 3M - Type III Med                       | DPM - Direct Pole Mount                                                              |
|        |                  |                 | 250 - 250W,32500LM | 65 - 6500K |             | GR - Graphite | 4 - Type IV                             | SFM - Slip Fitter Mount                                                              |
|        |                  |                 | 300 - 300W,39000LM |            |             | SR - Silver   | 5A - Type V (90°)<br>5B - Type V (120°) | TM - Trunnion Mount<br>PS - Photo-Sensor<br>EM - Factory Installed EM Battery Backup |



Job Name:

Catalog Number:

Type:

## SBBRIO SERIES | LED AREA LIGHT

### MOUNTING OPTIONS/ACCESSORIES

**UPM (Universal Pole Mount)**  
Suitable for Square & Round Pole



**DPM (Direct Pole Mount)**  
Suitable for Square & Round Pole



**SFM (Slip Fitter Mount)**

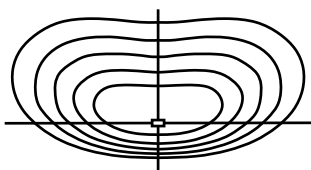


**TM (Trunnion Mount)**

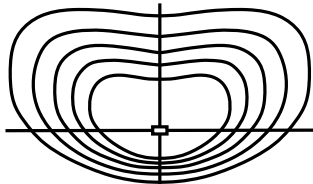


### DISTRIBUTION

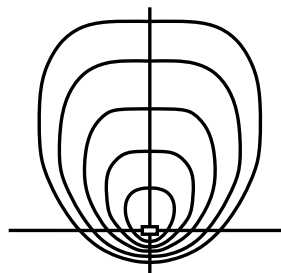
Type II



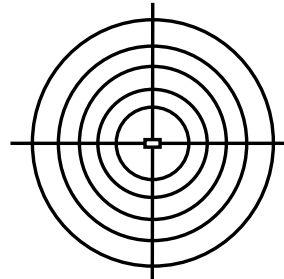
Type III



Type IV



Type V



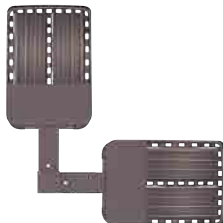
### POLE INSTALLATION SUGGESTIONS



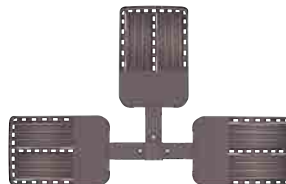
Single



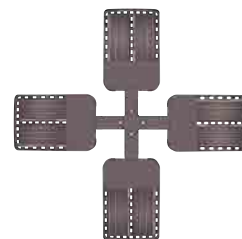
Twin 180D



Twin 90D



Triple 90D



Quad 90D

\*DUE TO THE CHANGES OF CONSTANT IMPROVEMENT IN LED TECHNOLOGY, ALL DETAILS ARE SUBJECT TO CHANGE WITHOUT NOTICE.  
CONSULT FACTORY FOR UP TO DATE INFORMATION.