



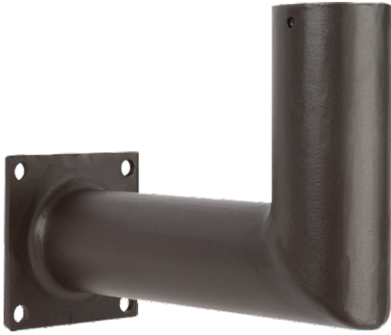
Job Name:

Catalog Number:

Type:

Angled Wall Mount Tenon Bracket

PRODUCT IMAGE



- This right-angle steel bracket is designed to be bolted on walls allowing any light fixture with a standard 2-3/8 inch slip fitter to be mounted on a flat wall. Mounting hardware is not included. This tenon bracket is available in a standard dark bronze finish.

- **Material:** Steel
- **Color:** Dark Bronze (Custom Color On-Request)
- **Tenon Length:** 14.50 inch
- **Total Height:** 11.56 inch
- **Weight:** 3.75 lbs

DIMENSIONS

