

HIGHLINE LED LIGHTING

LED LIGHTS FOR HOTEL/MOTEL & COMMERCIAL



CATALOG **2024**

INDEX



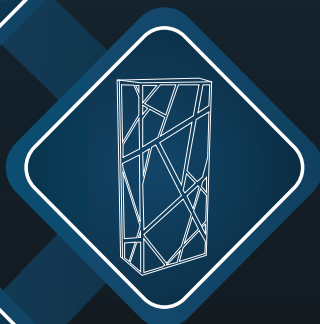
OUTDOOR LIGHTING
COLLECTION



INDOOR LIGHTING
COLLECTION



LED BATHROOM
LIGHTING



LED HALLWAY
LIGHTING



LED EXIT & EMERGENCY
LIGHTING



GUEST ROOM
LIGHTING



COMPANY OVERVIEW

We help companies, industries & people to experience the power & possibility of light. With our headquarters located in Midland TX, USA; HIGHLINE LED stands upfront since the year 2017. Within a short period of time; it has led us to a bright future considering our vast technical knowledge & professional experience in the field of lighting. Since our inception, we've thrived to design solutions that are high performance, energy efficient, cost efficient & easy to integrate.

VISION

Our vision is to expand our reach and offer solution to every lighting problem faced by any company, industry and individual that also with minimal cost and maximum performance. To establish ourselves as a one stop solution for lighting requirements across sectors.

MISSION

Our mission is to reach heights such a way that it benefits us as well as our clients and to offer every kind of solution to them. Our mission stands upright with a focus in becoming a global brand working for enlightening the World thereby illuminating the lives of our customers.



ABOUT US

Similar to most success stories, ours too started from a small 3000 SQFT warehouse. 2017 was the year when we decided to take our career in our hands and build a foundation for HIGHLINE LED, which is now headquartered in Midland, TX, USA with an operating facility spread across an area of 20,000 SQFT.

Under the leadership of our visionary founder, and with a team of dedicated and hard-working warriors, HIGHLINE LED is now a renowned name amongst home-owners, commercialists, as well as industrialists.

Our offerings for lighting solutions range from outdoor, indoor, and commercial with each product being highly accredited for its design, energy efficiency, and quality. Besides, we are constantly innovating to meet the evolving requirements of our customers, and offer customized solutions as well.

With more than 5000 clients across USA, hospitality and service sectors being the major partakers, HIGHLINE LED is committed to serving the best solutions with superior execution. We strive to payback the world by being energy-efficient and environment conscious.

Since sky has no limits, our ambitions are limitless too and our journey continues. Keeping up with the latest trends, we mark our presence at several trade shows and expos around the world. With HIGHLINE LED as your lighting solutions partner, your surroundings stay bright, aflight, and a delight.

A blurred background image of an outdoor lighting collection. It features several tall, slender light poles with multiple star-shaped light fixtures at the top. The scene is set at night or dusk, with a dark blue sky and a dark ground area. The overall aesthetic is modern and minimalist.

OUTDOOR LIGHTING

COLLECTION

LED SHOEBOX LIGHT

SPECIFICATION

Family	: SBBRIO				
Input	: 120-277V AC at 50/60Hz				
Dimming	: No				
Power	: 100W	: 150W	: 200W	: 250W	: 300W
Lumens	: 13000LM	: 26000LM	: 19500LM	: 32500LM	: 39000LM
CCT	: 3000K ~ 6500K				
CRI	: 80				
FINISH	: Black / Bronze				
OPTIONS	: Emergency Backup Photocell Occupancy Sensor House Shield				



LED FLOOD LIGHT

SPECIFICATION

Family	: FL2100			
Input	: 120-277V AC at 50/60Hz			
Dimming	: No			
Power	: 50W	: 100W	: 150W	: 200W
Lumens	: 6500LM	: 13000LM	: 19500LM	: 26000LM
CCT	: 3000K ~ 6500K			
CRI	: 80			
FINISH	: Black			
OPTIONS	: Emergency Backup			



LED CANOPY LIGHT

SPECIFICATION

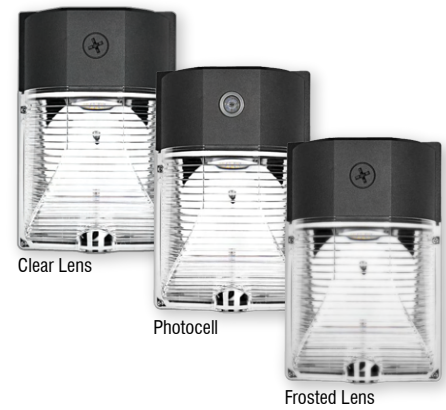
Family	: CPGEN2	
Input	: 120-277V AC at 50/60Hz	
Dimming	: No	
Power	: 65W	: 100W
Lumens	: 8450LM	: 13000LM
CCT	: 3000K ~ 6500K	
CRI	: 80	
FINISH	: Black / Bronze	
OPTIONS	: Emergency Backup Occupancy Sensor	



LED MINI WALLPACK

SPECIFICATION

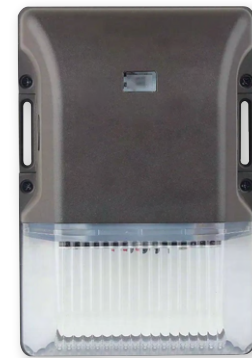
Family	: WPMINI	
Input	: 120-277V AC at 50/60Hz	
Dimming	: No	
Power	: 18W	: 25W
Lumens	: 2160LM	: 3000LM
CCT	: 3000K ~ 6500K	
CRI	: 80	
FINISH	: Black	
OPTIONS	: Photocell or Without Photocell	



LED MINI WALLPACK - GEN2

SPECIFICATION

Family	: WPMIG2	
Input	: 120-277V AC at 50/60Hz	
Dimming	: Yes	
Power	: 20W/25W/30W	
Lumens	: 2280LM ~ 4200LM	
CCT	: 3CCT (4000K/5000K/6500K)	
CRI	: 80	
FINISH	: Bronze	
OPTIONS	: Built-In Photocell Sensor	



LED TRADITIONAL WALLPACK

SPECIFICATION

Family	: WPGEN1					
Input	: 120-277V AC at 50/60Hz					
Dimming	: No					
Power	: 45W	: 60W	: 80W	: 100W	: 120W	: 150W
Lumens	: 5850LM	: 7800LM	: 10400LM	: 13000LM	: 15600LM	: 19500LM
CCT	: 3000K ~ 6500K					
CRI	: 80					
FINISH	: Bronze					
OPTIONS	: Emergency Backup Photocell					



LED ADJUSTABLE WALLPACK

SPECIFICATION

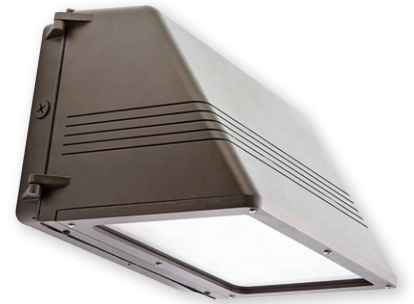
Family	: WPADJ	
Input	: 120-277V AC at 50/60Hz	
Dimming	: No	
Power	: 80W	: 100W
Lumens	: 10400LM	: 13000LM
CCT	: 3000K ~ 6500K	
CRI	: 80	
FINISH	: Black / Bronze	
OPTIONS	: Emergency Backup Photocell	



LED FULL CUT-OFF WALLPACK

SPECIFICATION

Family	: SBBRIO				
Input	: 120-277V AC at 50/60Hz				
Dimming	: No				
Power	: 100W	: 150W	: 200W	: 250W	: 300W
Lumens	: 13000LM	: 26000LM	: 19500LM	: 32500LM	: 39000LM
CCT	: 3000K ~ 6500K				
CRI	: 80				
FINISH	: Black / Bronze				
OPTIONS	: Emergency Backup Photocell House Shield				



LED POST TOP LIGHT

SPECIFICATION

Family	: PTDECO
Input	: 120-277V AC at 50/60Hz
Dimming	: Yes
Power	: 100W
Lumens	: 13000LM
CCT	: 3000K ~ 6500K
CRI	: 80
FINISH	: Silver
DISTRIBUTION	: Type-2 Type-3 Type-4 Type-5 (Default)



LED BOLLARD LIGHT

SPECIFICATION

Family	: BL2300
Input	: 120-277V AC at 50/60Hz
Dimming	: No
Power	: 20W
Lumens	: 2500LM
CCT	: 3000K ~ 6500K
CRI	: 80
FINISH	: Black / Bronze
DISTRIBUTION	: Symmetric



LED WALL WASHER

SPECIFICATION

Family	: WWGEN2
Input	: 120-277V AC at 50/60Hz
Dimming	: Yes
Power	: 45W
Lumens	: 5850LM
CCT	: 3000K ~ 6500K Blue Green RGB (Tunable)
CRI	: 80
FINISH	: Bronze
OPTIONS	: Emergency Backup Photocell House Shield



LED UP & DOWN LIGHT

SPECIFICATION

Family	: UPDNDH
Input	: 120-277V AC at 50/60Hz
Dimming	: No
Power	: 24W 36W 24W 36W 48W 72W
Lumens	: 2400LM 3600LM 2400LM 3600LM 4800LM 7200LM
CCT	: RGBW (Tunable) Red Green Blue Yellow Pink White Violet
CRI	: 80
Finish	: Black
Beam Angle	: 15° (Default) Customized Beam Angle on Request



LED UP OR DOWN LIGHT

SPECIFICATION

Family	: UPDNSH		
Input	: 120-277V AC at 50/60Hz		
Dimming	: No		
Power	: 18W	: 24W	: 36W
Lumens	: 1800LM	: 2400LM	: 3600LM
CCT	: RGBW (Tunable) Red Green Blue Yellow Pink White Violet		
CRI	: 80		
Finish	: Black		
Beam Angle	: 15° (Default) Customized Beam Angle on Request		



LED IN-GROUND LIGHT

SPECIFICATION

Family	: IG2600		
Input	: 120-277V AC at 50/60Hz		
Dimming	: No		
Power	: 24W		
Lumens	: 1920LM		
CCT	: 3000K ~ 6500K		
CRI	: 80		
FINISH	: Silver		
BEAM ANGLE	: 6° (Default) Customized Beam Angle on Request		



LED STEP LIGHT

SPECIFICATION

Family	: STPSGH		
Input	: 120V AC at 60Hz		
Dimming	: No		
Power	: 2W		
Lumens	: 100LM		
CCT	: 3000K		
Trim Style	: Horizontal Recessed		
Finish	: Black		
Installation	: Fits Standard Single Gang Junction Box		



LED STRING LIGHT

SPECIFICATION

Family	: STRING
Input	: 120V AC at 60Hz
Dimming	: Yes (With Dimmable Bulbs)
Length	: 24FT
Cord Type	: 16AGW SJTW
Socket Type	: E26
Socket Spacing	: 1.8FT
Total Sockets	: 12
Maximum Run	: 60 strings with 0.7W Bulbs



LED VAPOR TIGHT

SPECIFICATION

Family	: VT1800
Size	: 4FT
Input	: 120V-277V AC at 50/60Hz
Dimming	: Yes
Power	: 60W
Lumens	: 7500LM
CCT	: 3000K ~ 6500K
CRI	: 80
Finish	: White
Options	: Emergency Backup Occupancy sensor



LED VAPOR TIGHT - JELLY JAR

SPECIFICATION

Family	: VTJJAR
Input	: 120V-277V AC at 50/60Hz
Dimming	: No
Power	: 10W 22W
Lumens	: 800LM 1900LM
CCT	: 4000K ~ 6500K
CRI	: 80
Finish	: Gray
Mounting	: Ceiling Mount Wall Mount



Ceiling Mount

Wall Mount



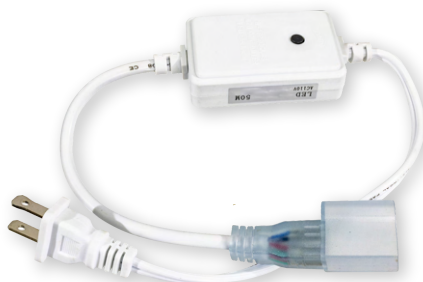
LED NEON LIGHT

SPECIFICATION

Family	: NEON
Input	: 120V AC at 60Hz
Dimming	: Yes
Power	: 0.24W Per LED
LED	: 60LED's Per Meter
CCT	: RGB RGBW (All Colors with Shades of White) Red Green Blue
LENGTH	: 25 or 50 Meter Per Roll
FINISH	: White
SMD CHIP	: 5050



NEON ACCESSORIES



Additional Power Supply
(50MT Max)



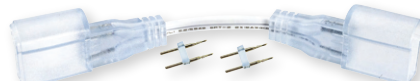
RGB Amplifier



RGB RF Controller



Female To Female Extension
(For RGB)



Female To Female Extension
(For Single Color)



End Caps
(2 Pcs Per Set)



Mounting Clips
(3 Pcs Per Foot)



Mounting Channel
(1MT Length)

LED STRIP LIGHTS

SPECIFICATION

Family	: STRIP	TAPE
Input	: 24V DC	120V AC
Dimming	: Yes	
Power	: 4.87W Per FT	3.35W Per FT
Lumens	: 579 LM Per FT	High Lumens
LED	: 42 LED's Per FT	18 LED's Per FT
CCT	: 3000K ~ 6500K RGB RGBW (All Colors with Shades of White)	
CRI	: 90	
Cutable	: Yes (Every 2")	Yes (Every 1.64")
Length	: 65.61 FT	164 FT
SMD CHIP	: 5050	



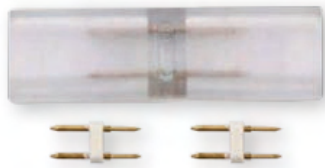
STRIP ACCESSORIES



120V Power Plug for Tape Light



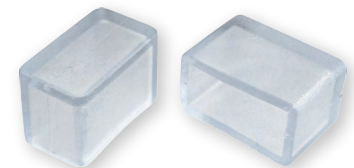
Power Supply for 24V Strip Light
Input: 120V-277V AC
Output: 24V DC
Power: 60W~300W



Straight Connector



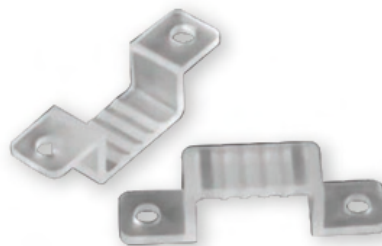
90° Connector



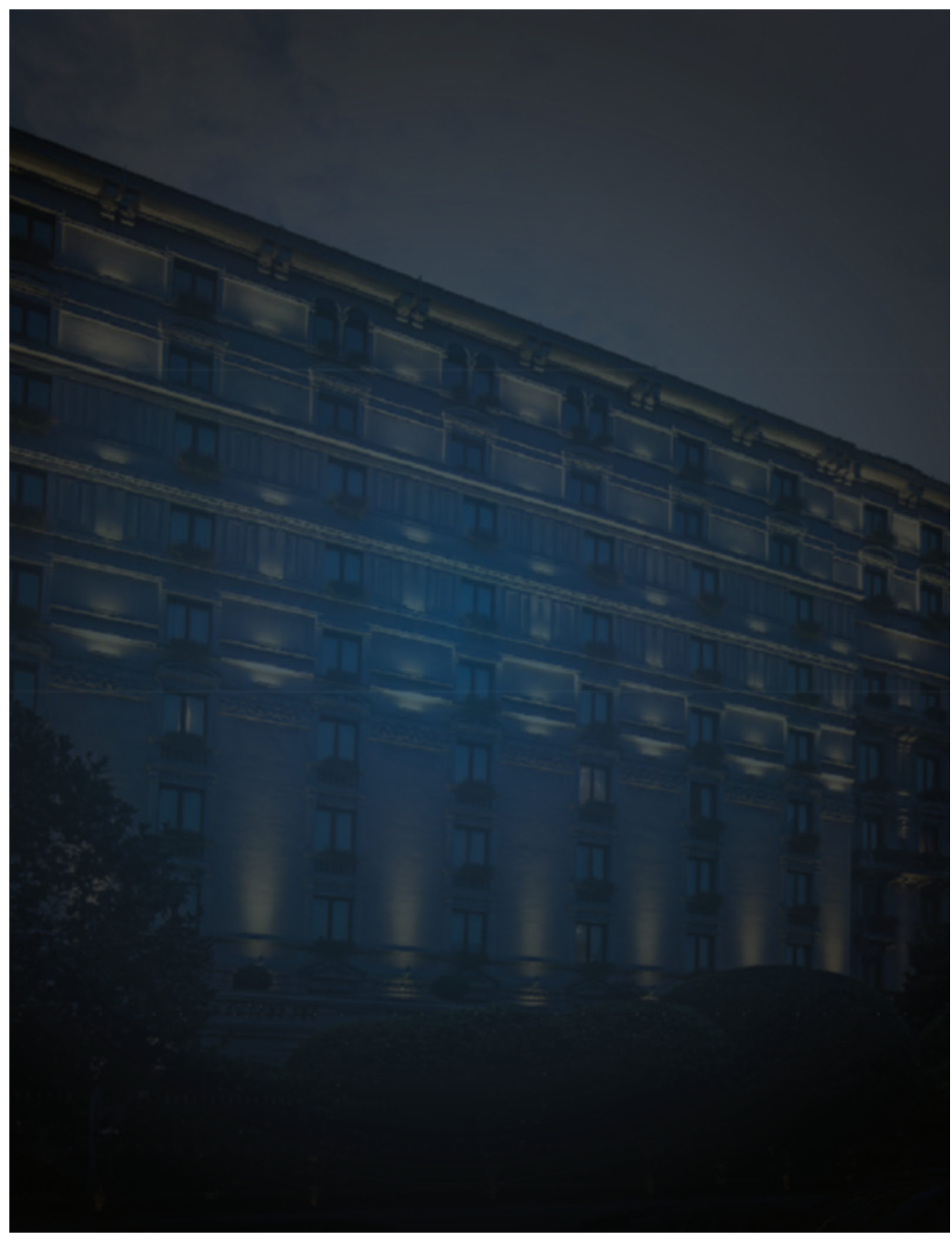
End Caps
(2 Pcs Per Set)



PVC Channel
(1MT Length)



Mounting Clips
(2 Pcs Per Set)





INDOOR LIGHTING COLLECTION

LED RETROFIT DOWNLIGHT

SPECIFICATION

Family	: RDL004	RDL006
Size	: 4"	6"
Input	: 120V AC at 60Hz	
Dimming	: Yes	
Power	: 14W	
Lumens	: 1120LM	
CCT	: 5CCT (27K/30K/40K/50K/65K)	
CRI	: 90	
FINISH	: White (Other Finish On Request)	
Options	: Emergency Backup	



LED DISK LIGHT

SPECIFICATION

Family	: DISK04	DISK04
Size	: 4"	6"
Input	: 120V AC at 60Hz	
Dimming	: Yes	
Power	: 12W	15W
Lumens	: 840LM	1050LM
CCT	: 5CCT (27K/30K/40K/50K/65K)	
CRI	: 90	
Finish	: White (Other Finish On Request)	
Options	: Emergency Backup	



IP65 LED DOWNLIGHT

SPECIFICATION

Family	: DLIP65	
Size	: 4"	6"
Input	: 120V AC at 60Hz	
Dimming	: Yes	
Power	: 12W	28W
Lumens	: 960LM	2240LM
CCT	: 5CCT (27K/30K/40K/50K/65K)	
CRI	: 80	
Finish	: White (Other Finish On Request)	
Options	: Emergency Backup	



LED RECESSED DOWNLIGHT

SPECIFICATION

Family	: DL1100
Size	: 6"
Input	: 120V AC at 60Hz
Dimming	: No
Power	: 22W
Lumens	: 2200LM
CCT	: 3000K - 6500K
CRI	: 80
Finish	: White (Other Finish On Request)



LED ULTRA THIN PANEL LIGHT (ROUND)

SPECIFICATION

Family	: USPLRD
Size	: 6" 7" 8"
Input	: 120V AC at 60Hz
Dimming	: Yes
Power	: 12W 15W 18W
Lumens	: 960LM 1200LM 1440LM
CCT	: 5CCT (30K/35K/40K/50K/65K)
CRI	: 80
Finish	: White (Other Finish On Request)



LED ULTRA THIN PANEL LIGHT (SQUARE)

SPECIFICATION

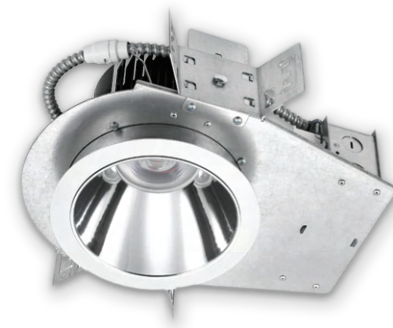
Family	: USPLSQ
Size	: 6" x 6" 7" x 7" 8" x 8"
Input	: 120V AC at 60Hz
Dimming	: Yes
Power	: 12W 15W 18W
Lumens	: 960LM 1200LM 1440LM
CCT	: 5CCT (30K/35K/40K/50K/65K)
CRI	: 80
Finish	: White (Other Finish On Request)



NEW ARCHITECTURAL DOWNLIGHT

SPECIFICATION

Family	: DLARG2					
Size	: 4"			: 6"		
Input	: 120V-277V AC at 50/60Hz					
Dimming	: Yes					
Power	: 13W	: 20W	: 25W	: 30W	: 36W	: 42W
Lumens	: 1040LM	: 1600LM	: 2000LM	: 2400LM	: 2880LM	: 3360LM
CCT	: 3000K~6500K					
CRI	: 90					
Reflector Finish	: Clear White Haze					
Trim Finish	: Self Flange White Self Flange No Flange					
Beam Angle	: 15° 36° (Default) 60° (Custom Beam Angle on Request)					
Options	: Emergency Backup					



LED UNDER CABINET LIGHT

SPECIFICATION

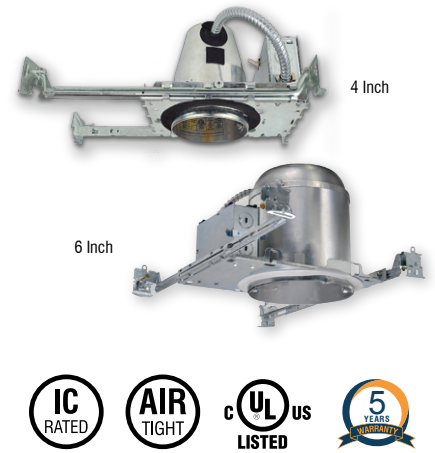
Family	: UC1400					
Size	: 9"	: 12"	: 18"	: 24"	: 34"	: 48"
Input	: 120V AC at 60Hz					
Dimming	: Yes					
Power	: 4W	: 5W	: 8W	: 10W	: 15W	: 20W
Lumens	: 336LM	: 455LM	: 752LM	: 890LM	: 1380LM	: 1860LM
CCT	: 3000K ~ 6500K					
CRI	: 80					
Finish	: White / Black / Bronze					
Options	: Emergency Backup Occupancy sensor					



NEW CONSTRUCTION HOUSING

SPECIFICATION

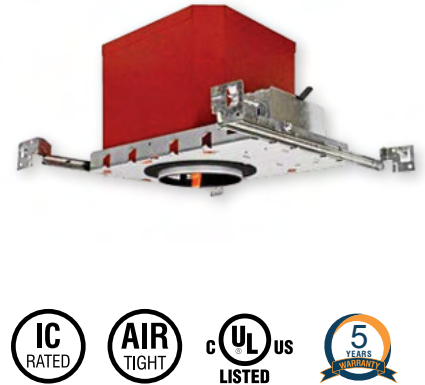
Family	:	NCHSG4	NCHSG6
Size	:	4"	6"
Input	:	120V AC at 60Hz	
Construction	:	New	
Lamp	:	LED	
IC-Rated	:	Yes	
Air-Tight	:	Yes	



NEW CONSTRUCTION HOUSING - FIRE RATED

SPECIFICATION

Family	:	NCHSG4	NCHSG6
Size	:	4"	6"
Input	:	120V AC at 60Hz	
Construction	:	New	
Lamp	:	LED	
IC-Rated	:	Yes	
Air-Tight	:	Yes	
Fire-Rated	:	Yes (UL Certified 1Hr. to 2Hrs Fire Rated)	



NEW CONSTRUCTION MOUNTING PLATE

SPECIFICATION

Family	:	NCMP
Size	:	3" / 4" / 6" Universal Size
Cut Hole Shape	:	Round
Installation	:	Flat Asymmetric
IC-Rated	:	Yes



LED PANEL LIGHT

SPECIFICATION

Family	: PL1X4	PL2X2	PL2X4
Size	: 1FT x 4FT	2FT x 2FT	2FT x 4FT
Input	: 120-277V AC at 50/60Hz		
Dimming	: Yes		
Power	: 20W/ 30W/ 40W	20W/ 30W/ 40W	30W/ 40W/ 50W/ 60W
Lumens	: 2500LM ~ 5000LM	2500LM ~ 5000LM	2500LM ~ 5000LM
CCT	: 3000K ~ 6500K		
CRI	: 80		
Finish	: White		
Options	: Emergency Backup Occupancy sensor		



LED TROFFER LIGHT

SPECIFICATION

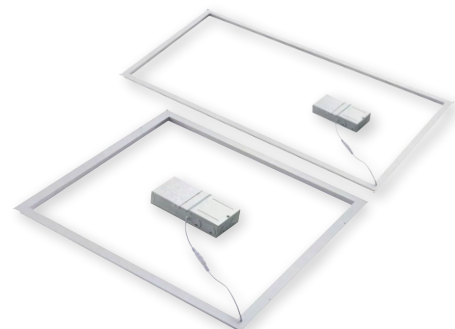
Family	: CBT2X2	CBT2X4
Size	: 2FT x 2FT	2FT x 4FT
Input	: 120-277V AC at 50/60Hz	
Dimming	: Yes	
Power	: 20W/25W/30W/35W/40W	25W/30W/35W/40W/50W
Lumens	: 3000LM ~ 6000LM	3750LM ~ 7500LM
CCT	: 3CCT (35K/40K/50K)	
CRI	: 80	
Finish	: White	
Options	: Emergency Backup Occupancy sensor	



LED GRID PANEL LIGHT

SPECIFICATION

Family	: FP2X2	FP2X4
Size	: 2FT x 2FT	2FT x 2FT
Input	: 120-277V AC at 50/60Hz	
Dimming	: Yes	
Power	: 40W	55W
Lumens	: 5000LM	6875LM
CCT	: 3000K ~ 6500K	
CRI	: 80	
Finish	: White	
Options	: Emergency Backup Occupancy sensor	



DOUBLE RING FLUSH MOUNT LIGHT

SPECIFICATION

Family	: FMDBLR	
Size	: 12"	: 14"
Input	: 120V AC at 60Hz	
Dimming	: Yes	
Power	: 20W	: 28W
Lumens	: 2000LM	: 2800LM
CCT	: 3000K ~ 6500K	
CRI	: 80	
FINISH	: Brushed Nickel Bronze	
Options	: Emergency Backup	



ULTRA SLIM FLUSH MOUNT CEILING LIGHT

SPECIFICATION

Family	: USSFPL	
Size	: 7"	: 12"
Input	: 120V AC at 60Hz	
Dimming	: No	
Power	: 15W	: 24W
Lumens	: 1500LM	: 2400LM
CCT	: 5CCT (2700K/3000K/3500K/4000K/5000K)	
CRI	: 80	
Finish	: White Powder Coated	



ULTRA SLIM FLUSH MOUNT CEILING LIGHT

SPECIFICATION

Family	: USSFPL	
Size	: 7"	: 12"
Input	: 120V AC at 60Hz	
Dimming	: No	
Power	: 15W	: 24W
Lumens	: 1500LM	: 2400LM
CCT	: 5CCT (2700K/3000K/3500K/4000K/5000K)	
CRI	: 80	
Finish	: Black Powder Coated	



LED SURFACE PANEL LIGHT (WHITE)

SPECIFICATION

Family	: SFPL				
Size	: 6"	: 8"	: 12"		
Input	: 120V AC at 60Hz				
Dimming	: No				
Power	: 12W	: 18W	: 22W	: 24W	: 30W
Lumens	: 1200LM	: 1800LM	: 2200LM	: 2400LM	: 3000LM
CCT	: 3000K ~ 6500K				
CRI	: 80				
Finish	: White (Other Finish On Request)				



LED SURFACE PANEL LIGHT - (ANODIZED)

SPECIFICATION

Family	: SFAPL		
Size	: 11.62"		
Shape	: Round	or	: Square
Input	: 120V AC at 60Hz		
Dimming	: No		
Power	: 15W	: 22W	: 30W
Lumens	: 1200LM	: 2200LM	: 3000LM
CCT	: 3000K ~ 6500K		
CRI	: 80		
Finish	: Silver Anodized		



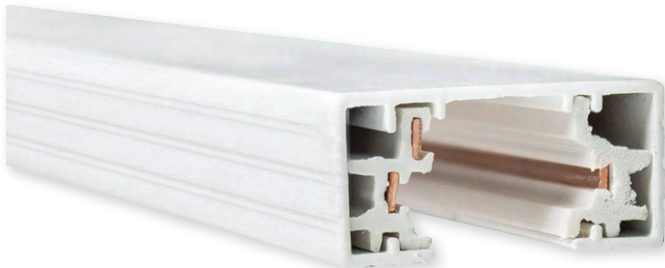
LED TRACK LIGHT

SPECIFICATION

Family	: TRK001		
Type	: H-Type		
Input	: 120V-277V AC at 50/60Hz		
Dimming	: Yes		
Power	: 15W	: 20W	: 30W
Lumens	: 1350LM	: 1800LM	: 2700LM
CCT	: 2700K~6500K		
CRI	: 90		
Finish	: White Black		
Beam Angle	: 15° 24° 38° 60°		
Options	: Honeycomb Louver Barndoors Adjustable Beam Angle		



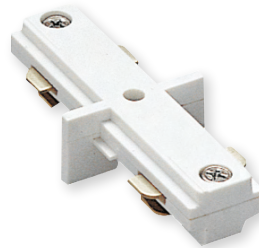
TRACK ACCESSORIES



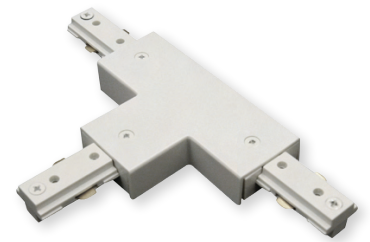
120V Single Circuit H-Track Rail
Length : 2FT | 4FT | 6FT | 8FT
Finish : White | Black



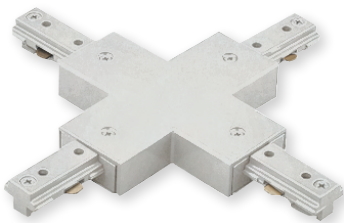
Live End Conduit
Finish : White | Black



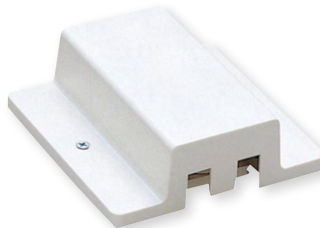
Straight Connector
Finish : White | Black



T - Connector
Finish : White | Black



X - Connector
Finish : White | Black



Floating Feed
Finish : White | Black



Suspension Kit
Finish : White | Black

LED T8 TUBE - G13 BASE

SPECIFICATION

Family	: T8TUBE		
Size	: 2FT	: 3FT	: 4FT
Input	: 120V - 277V AC at 50/60Hz		
Dimming	: Yes		
Power	: 10W	: 12W	: 18W
Lumens	: 1200LM	: 1440LM	: 2160LM
CCT	: 3000K ~ 6500K		
CRI	: 80		
Base Type	: G13 Base		
Finish	: White with Clear Lens		



LED T8 TUBE - FA8 BASE

SPECIFICATION

Family	: T8TUBE		
Size	: 8FT		
Input	: 120V - 277V AC at 50/60Hz		
Dimming	: Yes		
Power	: 40W		
Lumens	: 4800LM		
CCT	: 3000K ~ 6500K		
CRI	: 80		
Base Type	: FA8 Base		
Finish	: White with Clear Lens		



LED SIGN TUBE LIGHT

SPECIFICATION

Family	: T8SIGN					
Size	: 4FT	: 5FT	: 6FT	: 7FT	: 8FT	: 10FT
Input	: 120V - 277V AC at 50/60Hz					
Dimming	: Yes					
Power	: 21W	: 28W	: 28W	: 28W	: 28W	: 28W
Lumens	: 1200LM	: 2200LM	: 2200LM	: 2200LM	: 2200LM	: 2200LM
CCT	: 6500K					
CRI	: 80					
Base Type	: R17D Base					
Finish	: White with Clear Lens					



LED LIGHT BULB - E26 BASE

SPECIFICATION

Family	: LBE26		
Input	: 120V AC at 60Hz		
Dimming	: No		
Power	: 9W	: 12W	: 15W
Lumens	: 720LM	: 960LM	: 1200LM
CCT	: 2700K ~ 6500K		
CRI	: 80		
Base Type	: E26		
Options	: Occupancy Sensor Photocell (On Request)		
Beam Angle	: 240°		



LED LIGHT BULB - GU24 BASE

SPECIFICATION

Family	: LBGU24		
Bulb Shape	: GU24		
Dimming	: No		
Power	: 9W		
Lumens	: 720LM		
CCT	: 2700K ~ 6500K		
CRI	: 80		
Base Type	: E26		
Options	: Occupancy Sensor Photocell (On Request)		
Beam Angle	: 240°		



LED LINEAR LIGHT

SPECIFICATION

Family	: LIN1800			
Size	: 2FT	: 4FT	: 6FT	: 8FT
Input	: 120-277V AC at 50/60Hz			
Dimming	: Yes			
Power	: 20W	: 40W	: 60W	: 80W
Lumens	: 2400LM	: 4800LM	: 7200LM	: 9600LM
CCT	: 3000K ~ 6500K			
CRI	: 80 / 90			
Finish	: White (Other Finish on Request)			
Options	: Emergency Backup Occupancy Sensor			



LED WRAP LIGHT

SPECIFICATION

Family	: WRPRDS			
Size	: 2FT			: 4FT
Input	: 120-277V AC at 50/60Hz			
Dimming	: Yes			
Power	: 20W	: 32W	: 40W	: 48W
Lumens	: 2600LM	: 4160LM	: 5200LM	: 6240LM
CCT	: 3CCT (30K/40K/50K)			
CRI	: 80			
Finish	: White			
Options	: Emergency Backup Occupancy Sensor			



LED STRIP LIGHT

SPECIFICATION

Family	: LNRSTP			
Size	: 4FT			: 8FT
Input	: 120-277V AC at 50/60Hz			
Dimming	: Yes			
Power	: 20W	: 35W	: 64W	: 90W
Lumens	: 2600LM	: 4550LM	: 8320LM	: 11700LM
CCT	: 3CCT (30K/40K/50K)			
CRI	: 80			
Finish	: White			
Options	: Emergency Backup Occupancy Sensor			



LED LINEAR HIGH BAY LIGHT

SPECIFICATION

Family	: HBLINR	
Size	: 4FT	
Input	: 120-277V AC at 50/60Hz	
Dimming	: Yes	
Power	: 165W	: 325W
Lumens	: 21,450LM	: 42,250LM
CCT	: 4000K ~ 6500K	
CRI	: 80	
Finish	: White	
Options	: Emergency Backup Occupancy sensor	



LED UFO LIGHT

SPECIFICATION

Family	: HBUFO	
Input	: 120-277V AC at 50/60Hz	
Dimming	: Yes	
Power	: 100W	: 200W
Lumens	: 13,000LM	: 26,000LM
CCT	: 4000K ~ 6500K	
CRI	: 80	
Finish	: Black	
Options	: Emergency Backup Occupancy sensor	



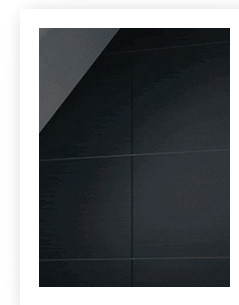


LED BATHROOM LIGHTING

ILLUMINATED MIRROR - 2FT X 3FT

SPECIFICATION

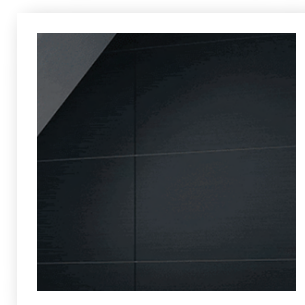
Family	: IMLURE
Size	: 2FT x 3FT
Input	: 120V-277V AC at 50/60Hz
Dimming	: No
Power	: 76W
Lumens	: 6384LM
CCT	: 3000K ~ 6500K
CRI	: 90
Defogger	: Yes
Options	: On/Off Touch Switch (On Request)



ILLUMINATED MIRROR - 3FT X 3FT

SPECIFICATION

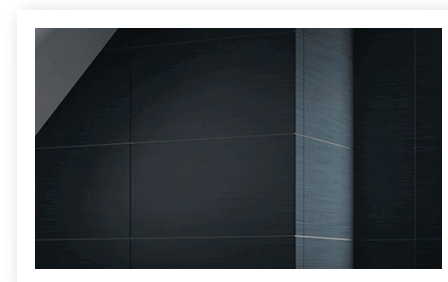
Family	: IMLURE
Size	: 3FT x 3FT
Input	: 120V-277V AC at 50/60Hz
Dimming	: No
Power	: 90W
Lumens	: 7560LM
CCT	: 3000K ~ 6500K
CRI	: 90
Defogger	: Yes
Options	: On/Off Touch Switch (On Request)



ILLUMINATED MIRROR - 4FT X 3FT

SPECIFICATION

Family	: IMLURE
Size	: 4FT x 3FT
Input	: 120V-277V AC at 50/60Hz
Dimming	: No
Power	: 106W
Lumens	: 8904LM
CCT	: 3000K ~ 6500K
CRI	: 90
Defogger	: Yes
Options	: On/Off Touch Switch (On Request)



LED VANITY LIGHT

SPECIFICATION

Family	: VL9001	VL9002
Size	: 3FT	4FT
Input	: 120V-277V AC at 50/60Hz	
Socket Type	: T8	
No. of Sockets	: 2 x T8 Tubes	
Max Power Per Socket	: 60W	
Connection Type	: 1280LM	
Finish	: White Acrylic Diffuser With Brushed Nickel Finish	



LED VANITY LIGHT

SPECIFICATION

Family	: VL9003	VL9005
Size	: 2FT	3FT
Input	: 120V AC at 50/60Hz	
Dimming	: No	
Power	: 26W	36W
Lumens	: 2080LM	2880LM
CCT	: 3000K ~ 6500K	
CRI	: 80	
Finish	: White Acrylic Diffuser with Brushed Nickel Finish	



LED VANITY LIGHT

SPECIFICATION

Family	: VL9006	VL9007
Size	: 2FT	3FT
Input	: 120V AC at 50/60Hz	
Dimming	: Yes	
Power	: 24W	34W
Lumens	: 1920LM	2720LM
CCT	: 3CCT (3000K/4000K/6500K)	
CRI	: 80	
Finish	: White Acrylic Diffuser with Brushed Nickel or Matte Black Finish	



EXHAUST FAN - FLOW

SPECIFICATION

Family : EFFLOW

Size : 8" x 8"

Input : 120V AC at 60Hz

Dimming : No

Power : 42W (30W Motor + 12W LED)

Lumens : 960LM

CCT : 3000K ~ 6500K

CRI : 80

Finish : White

Air Flow Capacity : 100 CFM



EXHAUST FAN - STREAM

SPECIFICATION

Family : EFSTRM

Size : 10" x 10"

Input : 120V AC at 60Hz

Dimming : No

Power : 45W (30W Motor + 15W LED)

Lumens : 960LM

CCT : 3000K ~ 6500K

CRI : 80

Finish : White

Air Flow Capacity : 100 CFM



EXHAUST FAN - EFBRZE

SPECIFICATION

Family : EFBRZE

Size : 7" x 7"

Input : 120V AC at 60Hz

Dimming : No

Power : 49W (30W Fan + 18W LED)

Lumens : 1800LM

CCT : 5500K

CRI : 80

Finish : White

Air Flow Capacity : 110 CFM



EXHAUST FAN - EFBRZE

SPECIFICATION

Family : EFBRZE

Size : 9" x 9"

Input : 120V AC at 60Hz

Dimming : No

Power : 54W (36W Fan + 18W LED)

Lumens : 1800LM

CCT : 5500K

CRI : 80

Finish : White

Air Flow Capacity : 120 CFM





LED HALLWAY
LIGHTING

LED WALL SCONCE - 1001

SPECIFICATION

Family	: WS1001
Input	: 120V AC at 60Hz
Dimming	: No
Power	: 16W
Lumens	: 1280LM
CCT	: 3000K ~ 6500K
CRI	: 80
Finish	: White Acrylic Shade with Bronze
Options	: Emergency Backup Occupancy sensor



LED WALL SCONCE - 1002

SPECIFICATION

Family	: WS1002
Input	: 120V AC at 60Hz
Dimming	: No
Power	: 16W
Lumens	: 1280LM
CCT	: 3000K ~ 6500K
CRI	: 80
Finish	: White Acrylic Shade with Chrome Finish
Options	: Emergency Backup Occupancy sensor



LED WALL SCONCE - 1003

SPECIFICATION

Family	: WS1003
Input	: 120V AC at 60Hz
Dimming	: No
Power	: 16W
Lumens	: 1280LM
CCT	: 3000K ~ 6500K
CRI	: 80
Finish	: White Glass Shade with Chrome Finish
Options	: Emergency Backup Occupancy sensor



LED WALL SCONCE - 1004

SPECIFICATION

Family	: WS1004
Input	: 120V AC at 60Hz
Dimming	: No
Power	: 16W
Lumens	: 1280LM
CCT	: 3000K ~ 6500K
CRI	: 80
Finish	: White Acrylic Shade with Bronze
Options	: Emergency Backup Occupancy sensor



LED WALL SCONCE - 1005

SPECIFICATION

Family	: WS1005
Input	: 120V AC at 60Hz
Dimming	: Yes
Power	: 12W
Lumens	: 1200LM
CCT	: 3000K ~ 5000K
CRI	: 80
Finish	: White Acrylic Shade with Silver/Bronze Finish
Options	: Emergency Backup Occupancy sensor



LED WALL SCONCE - 1006

SPECIFICATION

Family	: WS1006
Input	: 120V AC at 60Hz
Dimming	: No
Power	: 14W
Lumens	: 1120LM
CCT	: 3CCT (3000K/4000K/6500K)
CRI	: 80
Finish	: White Acrylic Shade with Matte Black Finish
Options	: N/A



LED WALL SCONCE - 1007

SPECIFICATION

Family	: WS1007
Input	: 120V AC at 60Hz
Dimming	: No
Power	: 22W
Lumens	: 1760LM
CCT	: 3CCT (3000K/4000K/6500K)
CRI	: 80
Finish	: White Acrylic Shade with Matte Black Finish
Options	: N/A



LED WALL SCONCE - 1008

SPECIFICATION

Family	: WS1008
Input	: 120V AC at 60Hz
Dimming	: No
Power	: 22W
Lumens	: 1760LM
CCT	: 3CCT (3000K/4000K/6500K)
CRI	: 80
Finish	: White Acrylic Shade with Brushed Nickel or Matte Black Finish
Options	: N/A



LED WALL SCONCE - 1010

SPECIFICATION

Family	: WS1010
Input	: 120V AC at 60Hz
Dimming	: No
Power	: 16W
Lumens	: 1280LM
CCT	: 3CCT (3000K/4000K/6500K)
CRI	: 80
Finish	: White Acrylic Shade with Brushed Nickel or Matte Black Finish
Options	: N/A



LED WALL SCONCE - WSRSC

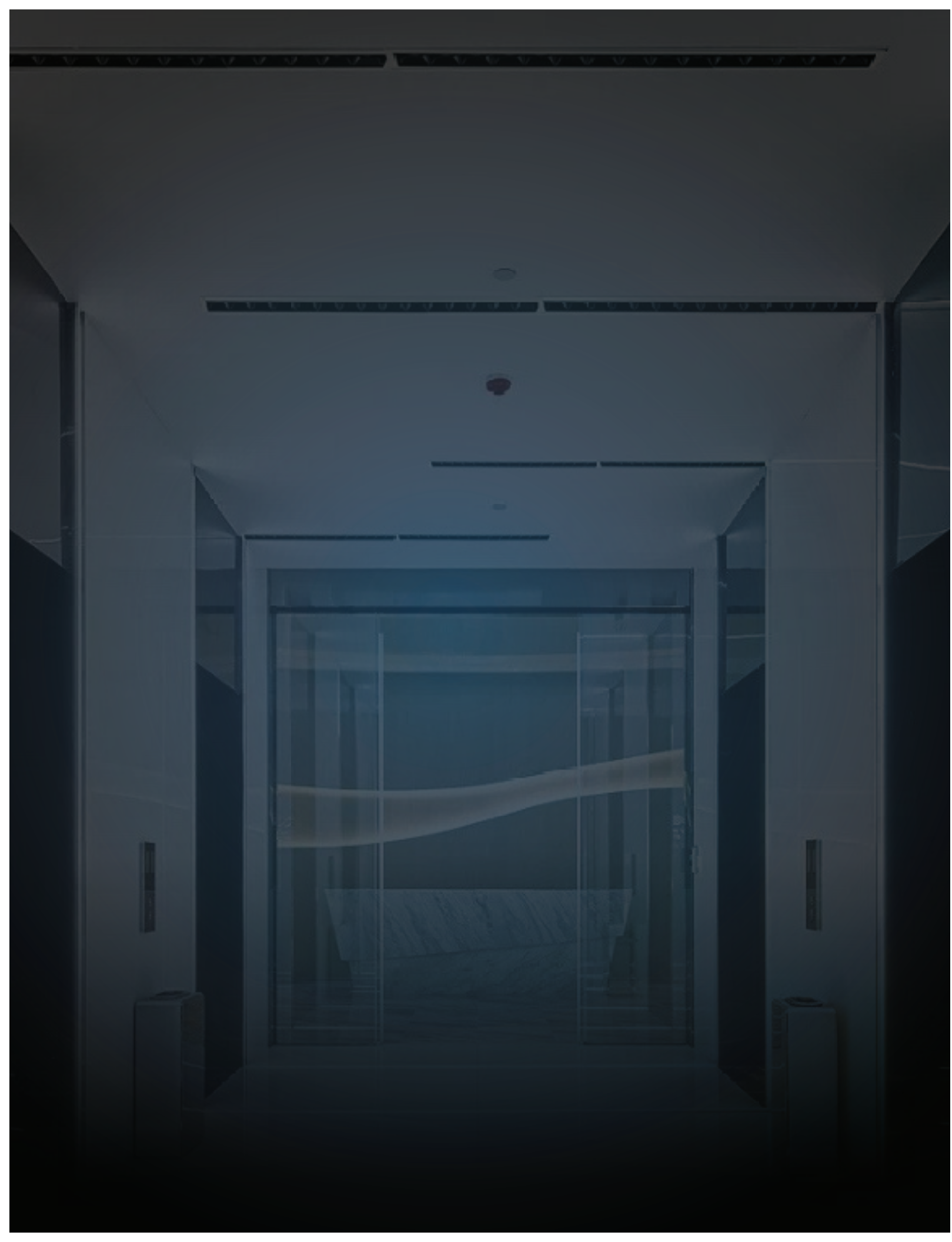
SPECIFICATION

Family	:	WSRSC
Input	:	120V AC at 60Hz
Dimming	:	No
Power	:	24W
Lumens	:	1920LM
CCT	:	3CCT (3000K/4000K/6500K)
CRI	:	80
Finish	:	White Acrylic Shade with Matte Black or Wooden (Danish Maple) Finish
Options	:	N/A



◀ TUNABLE ▶
CCT







EXIT & EMERGENCY
LIGHTING

EDGE-LIT EXIT LIGHT

SPECIFICATION

Family	: EXEDGE
Input	: 120/277V AC at 50/60Hz
Power	: 5W
Face Type	: Single Face Double Face
Panel Type	: Clear Acrylic White Acrylic
Letter Size	: 6 Inches
Letter Color	: Red
Housing	: Brushed Aluminum
Mounting	: Universal
Emergency Operation	: 90+ Minutes on Power Failure



WET LOCATION EXIT LIGHT

SPECIFICATION

Family	: EXTWR
Input	: 120/277V AC at 50/60Hz
Power	: 5W
Face Type	: Single Face or Double Face
Letter Size	: 6 Inches
Letter Color	: Red Green
Housing	: White ABS Thermoplastic
Mounting	: Universal
Emergency Operation	: 90+ Minutes on Power Failure



LED EXIT LIGHT WITH EMERGENCY HEADS

SPECIFICATION

Family	: EXWEM2
Input	: 120/277V AC
Power	: 1W x 2 Heads
Face Type	: Single Face or Double Face
Letter Size	: 6 Inches
Letter Color	: Red or Green
Lamp Heads	: 2 Heads Side Mounted
Housing	: White ABS Thermoplastic
Mounting	: Universal
Emergency Operation	: 90+ Minutes on Power Failure



DUAL HEAD EMERGENCY LIGHT

SPECIFICATION

Family	: EM2400
Input	: 120/277V AC at 50/60 Hz
Power	: 9W (1.5W x 2 Heads)
Head Type	: Twin Head Adjustable
Housing	: White ABS Thermoplastic
Mounting	: Universal
Testing	: Manual
Emergency Operation	: 90+ Minutes on Power Failure



ARCHITECTURAL EMERGENCY LIGHT

SPECIFICATION

Family	: EMOVAL
Input	: 120/277V AC at 50/60Hz
Power	: 12W
Dimming	: Yes
Lumens	: 1286LM
CCT	: 5000K
Housing	: Die Cast Aluminum
Finish	: Dark Bronze, Black, White
Emergency Operation	: 90+ Minutes on Power Failure
Options	: Built-In Photocell & Motion Sensor



ARCHITECTURAL EMERGENCY LIGHT

SPECIFICATION

Family	: EMOVG2
Input	: 120/277V AC at 50/60Hz
Power	: 11.5W
Dimming	: Yes
Lumens	: 1250LM
CCT	: 3CCT (3000K/4000K/5000K)
CRI	: 80
Finish	: Dark Bronze, Black, White
Emergency Operation	: 90+ Minutes on Power Failure
Options	: Built-In Photocell & Motion Sensor







GUEST ROOM LIGHTING

LED CUBE WALL LIGHT - SINGLE

SPECIFICATION

Family	: HBCUBE
Input	: 120V - 277V AC at 50/60Hz
Dimming	: No
Power	: 12W
Lumens	: 960LM
CCT	: 3000K ~ 6500K
CRI	: 80
Finish	: White Acrylic with Brushed Nickel / White Acrylic with Matte Black
Options	: N/A



LED CUBE WALL LIGHT - DOUBLE

SPECIFICATION

Family	: HBCUBE
Input	: 120V - 277V AC at 50/60Hz
Dimming	: No
Power	: 24W
Lumens	: 1920LM
CCT	: 3000K ~ 6500K
CRI	: 80
Finish	: White Acrylic with Brushed Nickel / White Acrylic with Matte Black
Options	: N/A



LED CUBE WALL LIGHT - DOUBLE XL

SPECIFICATION

Family	: HBCUBE
Input	: 120V - 277V AC at 50/60Hz
Dimming	: No
Power	: 24W
Lumens	: 1920LM
CCT	: 3000K ~ 6500K
CRI	: 80
Finish	: White Acrylic with Brushed Nickel / White Acrylic with Matte Black
Options	: N/A



FOR BLUE 2.0 SINGLE HEADBOARD

SPECIFICATION

Family	:	BPFBC
Input	:	120V A.C/60Hz
Dimming	:	No
Power	:	12W
Lumens	:	960LM
CCT	:	3CCT (30K/40K/50K)
CRI	:	80
Finish	:	White Frosted Acrylic Diffuser with Twinkle Gloss Finish
Options	:	N/A



↑ TUNABLE ↓
CCT



FOR BLUE 2.0 TWIN HEADBOARD

SPECIFICATION

Family	:	BPFBC
Input	:	120V A.C/60Hz
Dimming	:	No
Power	:	24W
Lumens	:	1920LM
CCT	:	3CCT (30K/40K/50K)
CRI	:	80
Finish	:	White Frosted Acrylic Diffuser with Twinkle Gloss Finish
Options	:	N/A



↑ TUNABLE ↓
CCT



RADIANCE COLLECTION



Single Headboard



Twin Headboard



Floor Lamp



Single Table Lamp



Twin Table Lamp

GEM. COLLECTION



Yellow Desk Lamp



LED Vanity Light - 2FT



LED Headboard Light



LED Vanity Light - 3FT



Blue Desk Lamp

DIVINE COLLECTION



Single Headboard



Twin Headboard



Floor Lamp



Single Table Lamp



Twin Table Lamp



Desk Lamp

LA QUINTA COLLECTION



Single Headboard



Twin Headboard



Floor Lamp



Single Table Lamp



Twin Table Lamp

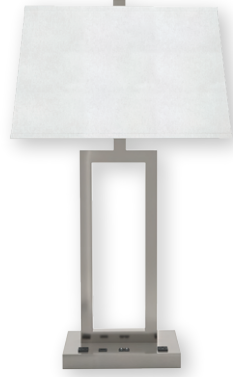


Desk Lamp

VERDE LUXE 2.0 COLLECTION



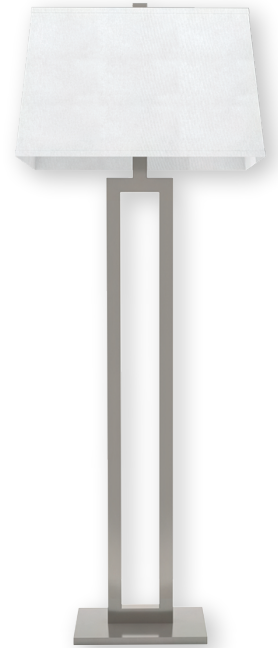
Single Table Lamp



Twin Table Lamp

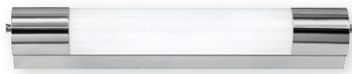


Desk Lamp



Floor Lamp

INNOVATE COLLECTION



Vanity Light



Ceiling Lamp



Single & Twin Headboard



Single Table Lamp



Twin Table Lamp



Desk Lamp



Floor Lamp

CASUAL COLLECTION



Single Headboard



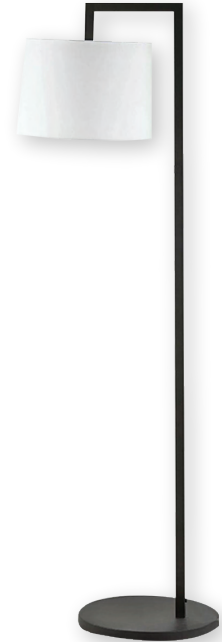
Twin Headboard



Table Lamp



Desk Lamp



Floor Lamp

CONFIDENT COLLECTION



Vanity Light - 2.5FT



Vanity Light - 4.5FT



Single Headboard



Twin Headboard



Table Lamp



Floor Lamp

AZURE COLLECTION



Ceiling Light



Table Lamp



Floor Lamp



Single Headboard



Twin Headboard

TRIBECA COLLECTION



Wallscone



Headboard Light



Side Table Lamp



Table Lamp



Floor Lamp

RISE & SHINE COLLECTION



24" Ceiling Light



Matte Black Finish
Wall Lamp



Copper Pot Finish
Wall Lamp



Floor Lamp



Headboard with
Reading light

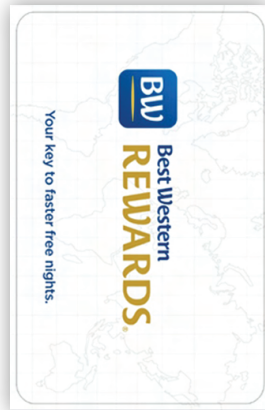
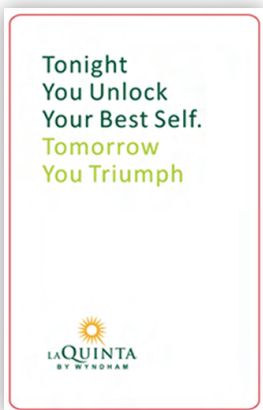
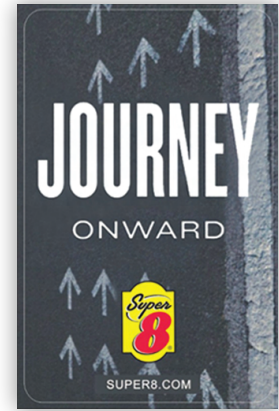
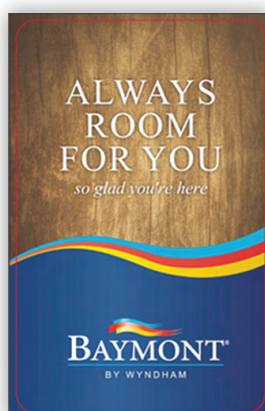
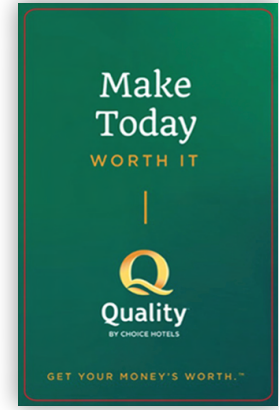


Wall Sconce



Table Lamp

RFID KEY CARDS



POLE & POLE MOUNTS

Square & Round Steel Poles & Mounts



SQUARE POLE



ROUND POLE



Wall Mount Bracket
Tenon: 1 x Horizontal Tenon



L - Shape Wall Mount Bracket
Tenon: 1 x L shaped Tenon



Side Tenon Bracket
Tenon: 1 x Horizontal Tenon



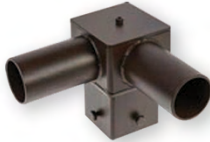
4" / 5" Square Pole Bracket
Tenon: 1 x Vertical Tenon



4" / 5" Square Pole Bracket
Tenon: 1 x Horizontal Tenon



4" / 5" Square Pole Bracket
Tenon: 2 x Horizontal Tenon 180°



4" / 5" Square Pole Bracket
Tenon: 2 x Horizontal Tenon 90°



4" / 5" Square Pole Bracket
Tenon: 3 x Horizontal Tenon



4" / 5" Square Pole Bracket
Tenon: 4 x Horizontal Tenon



4" Square Pole Bracket
Tenon: 2 x Vertical Tenon 180°



4" Square Pole Bracket
Tenon: 4 x Vertical Tenon



1 Arm Wrap Around Bracket for
Wood Poles with 7-10 Inch Diameter



Tenon Bullhorn
Tenon: 2 x Vertical Tenon



Tenon Bullhorn
Tenon: 3 x Vertical Tenon



Tenon Bullhorn
Tenon: 4 x vertical tenon

ERGO CHAIR



FEATURES & SPECIFICATION

- High Back Ergo Chair with Arms (Also available without Arms)
- Fully adjustable, Completely supportive and super comfortable
- Pneumatic Adjustable Seat Height, Armrest, Backrest, and Seat Tilt
- Smooth recline with different lockable positions
- Flexible lumbar support for any seated position
- Polishing Electroplating Metal Frame (Polished Chrome Finish) and Metal Arm with Synthetic Leather
- 5-Vane Polished Aluminum Base with Twin Wheel Casters
- Fully supportive up to 330lbs
- 100% earth-friendly materials

METAL BED FRAME

FEATURES & SPECIFICATION

- Cold Rolled Carbon Steel Product
- All 4 Sides Bed Base Cover
- Premium Platform Based 17 Inch-High Metal Bed Frame
- Corrosion Resistant Rust-Free Powder Coating
- Lighter than a Wooden Bed Frame
- Bugs, Water and Fireproof
- 12 Minutes assembly time
- High Quality zero Maintenance

SIZES AVAILABLE :

King Size - 76" x 80"

Queen Size - 60" x 80"

Full Size - 54" x 80"



NOTES





Contact Us:



www.highlineled.com



432.247.8000



usasales@highlineled.com

